



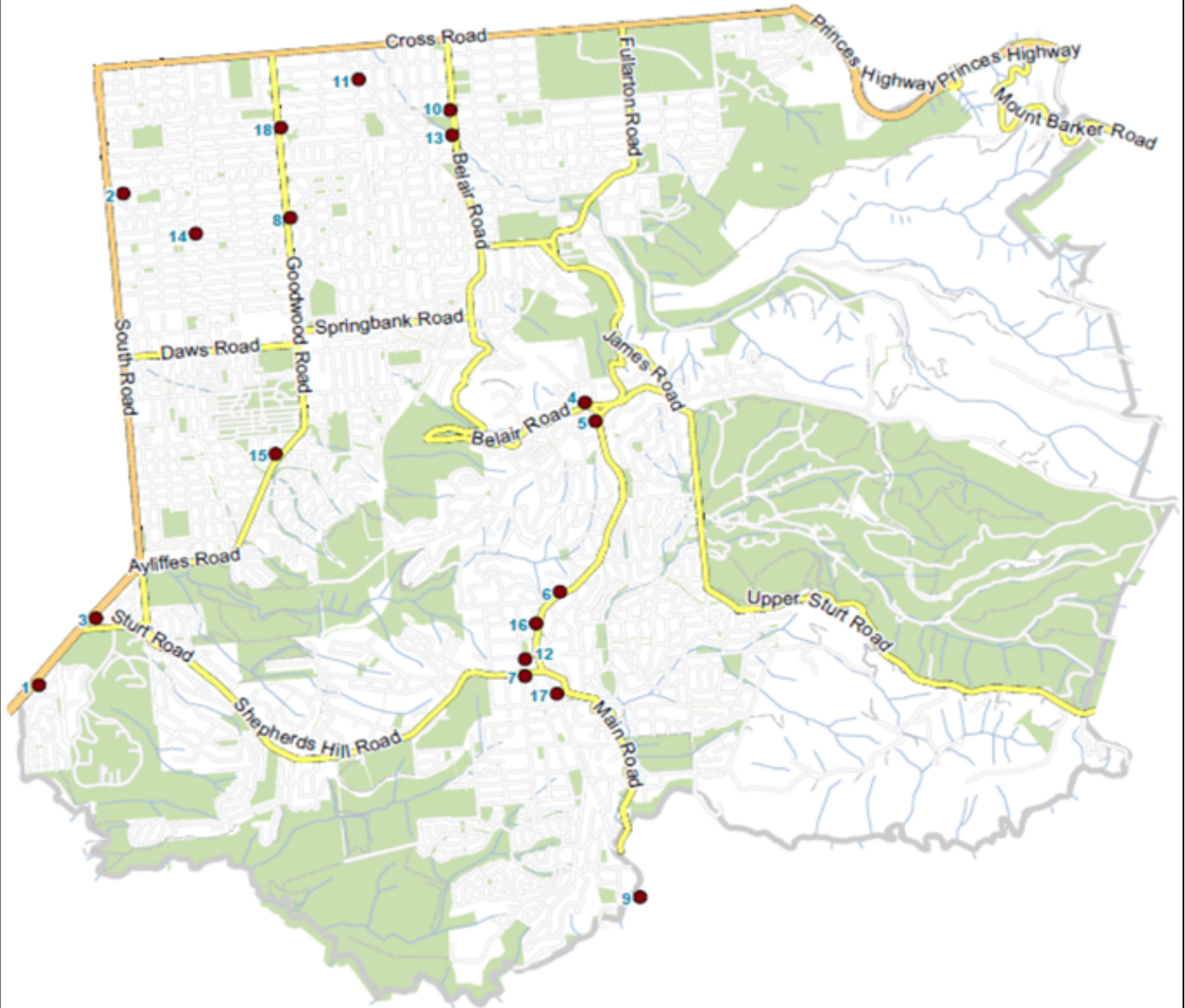
# General Practitioners, Support and Disability Services

Street Address:  
131 Belair Road  
Torrens Park SA 5062

Postal Address:  
PO Box 21  
Mitcham Shopping Centre  
Torrens Park SA 5062

Phone: (08) 8372 8888  
Fax: (08) 8372 8101  
[mitcham@mitchamcouncil.sa.gov.au](mailto:mitcham@mitchamcouncil.sa.gov.au)  
[www.mitthamcouncil.sa.gov.au](http://www.mitthamcouncil.sa.gov.au)

## CITY OF MITCHAM Surgeries Map



No.	Name of Clinic
1.	1447 South Road Clinic
2.	Allcare Medical Centre
3.	Bedford Medical Clinic
4.	Belair Family Health Centre
5.	Belair Medical Clinic
6.	Blackwood Family Care
7.	Blackwood Family Medical Centre
8.	Colonel Light Surgery
9.	Coromandel Medical Centre
10.	Crafter Medical Centre
11.	Dr Anderson's Practice
12.	Dr Moey's Practice
13.	Kingswood Clinic
14.	Melrose Park Medical Centre
15.	Pasadena Surgery
16.	Russell Clinic
17.	The Blackwood Clinic
18.	Westbourne Park House

Every effort has been made to provide correct information at the time of printing. Please notify changes to [communityinfo@mitchamcouncil.sa.gov.au](mailto:communityinfo@mitchamcouncil.sa.gov.au) You can update your club or group records on Connecting Up [www.sacommunity.org](http://www.sacommunity.org)  
For more Information click on [www.mitchamcouncil.sa.gov.au](http://www.mitchamcouncil.sa.gov.au) Printed April 19

### Local Health Services

Flinders Medical Centre	8204 5511
Repatriation General	8276 9666
<b>Private Hospitals:</b>	
Flinders Private	8275 3333
Noarlunga Private	8384 9372
Southern Districts War Memorial	8323 6600
Gleneig Community	8294 5555
<b>Community Health Centres:</b>	
Clovelly Park	8277 2488
Southern Women's	8384 9555

### Other Services:

Australian Red Cross Marion Donor Centre	13 14 95
<b>Public Hospitals:</b>	
Noarlunga Community	8384 9222
Griffith Rehabilitation	8298 4299
Holdfast Private	8294 5544
Ashford	8375 5222
Woodcroft	8325 8100
Southern Vales	8392 4500
Mitcham Prostrate Cancer	8296 3350 or 8277 3424

**Clinics & Medical Practices - Health Direct Advice 1800 022 222 - Registered Nurse free medical advice**

<b>Belair Family Health Centre</b> Belair Rd	8278 8900 <a href="http://www.belairfamilyhealthcentre.com.au">www.belairfamilyhealthcentre.com.au</a>
<b>Belair Medical Clinic</b> Main Road	8278 8311 <a href="http://www.belairmedical.net.au">www.belairmedical.net.au</a>
<b>Blackwood Hospital After Hours GP Service</b>	8130 3405
<b>Dr C L Moey Practice</b> Young Street Blackwood	8278 6620
<b>Russell Clinic</b> Main Rd, Blackwood	8278 1111 <a href="http://www.russellclinic.com">www.russellclinic.com</a>
<b>Blackwood Clinic</b> Coromandel Pde Blackwood	8278 6666 <a href="http://www.blackwoodclinic.com.au">www.blackwoodclinic.com.au</a>
<b>Blackwood Family Care</b> Main Road	8370 2999
<b>Blackwood Family Medical Centre</b> Shepherds Hill	8178 0087 <a href="http://www.blackwoodfmc.com.au">www.blackwoodfmc.com.au</a>
<b>Clovelly Park Bedford Medical Clinic</b> South Rd	8276 5055 <a href="http://www.bedfordmedical.com.au">www.bedfordmedical.com.au</a>
<b>Colonel Light Gardens Medical Centre</b> Goodwood Rd	8276 8933 <a href="http://www.colonellightmedical.com.au">www.colonellightmedical.com.au</a>
<b>Coromandel Valley Medical Clinic</b> Main Rd	8278 8505
<b>Hawthorn Kingswood Clinic</b> Belair Rd	8130 3405
<b>Crafter Medical Centre</b> Belair Rd	8272 5533 <a href="http://www.craftermc.com.au">www.craftermc.com.au</a>
<b>Melrose Park Allcare Medical Centre</b> Edward St	8371 1191
<b>Pasadena Surgery</b> Fiveash Drv	7324 4585 <a href="http://www.pasadenamedical.com.au">www.pasadenamedical.com.au</a>
<b>Westbourne Park House</b> Goodwood Rd	8271 8911
<b>Westbourne Park Medical Centre</b> Goodwood Rd	8272 6044

**Disability Services**
**Accommodation Options**

<b>Bedford Industries - Balyana</b> Strathcona Ave Clapham	8374 3074 <a href="http://www.bedfordgroup.com.au">www.bedfordgroup.com.au</a>
<b>Unity Housing Company</b> Osmond Terrace Norwood	8237 8777 <a href="http://www.unityhousing.org.au">www.unityhousing.org.au</a>
<b>Kingswood Hos</b> Cambridge Tce	8271 5341
<b>Mowbray House</b> Kingston Ave Daw Park	8374 0566 <a href="http://www.mowbrayhouse.com.au">www.mowbrayhouse.com.au</a>
<b>Orana</b> Watson Avenue, Netley	8375 2000 <a href="http://www.oranaonline.com.au">www.oranaonline.com.au</a>

**Attendant Care, Respite Care & Home Support**

<b>Aboriginal Home Care Program</b> Henley Beach Rd Mile End	8346 9155 <a href="http://www.aboriginalccsa.org.au">www.aboriginalccsa.org.au</a>
<b>CARA (Community Accommodation &amp; Respite Agency)</b>	8347 4588 <a href="http://www.cara.org.au">www.cara.org.au</a>
<b>Carer Support</b> South Road Glandore	8379 5777 <a href="https://carersupport.org.au/">https://carersupport.org.au/</a>
<b>Community Support (CSI)</b> Woodville Road	8429 1200 <a href="http://www.csisa.org.au">www.csisa.org.au</a>
<b>Respite Care Prog Families Children with Disability</b>	8226 1000 <a href="http://www.decd.sa.gov.au">www.decd.sa.gov.au</a>
<b>Dial an Angel SA</b>	8338 3433 <a href="http://www.dialanangel.com">www.dialanangel.com</a>
<b>Help at Home</b> Portrush Road Maylands	8165 5355 <a href="http://www.helpathomeinc.com.au">www.helpathomeinc.com.au</a>
<b>Homecare Plus</b> Greenhill Road Dulwich	8355 3500 <a href="http://homecareplus.asn.au/">http://homecareplus.asn.au/</a>
<b>Southern Adelaide Palliative Services</b> Daw House	8275 1732 <a href="http://www.pallcare.asn.au">www.pallcare.asn.au</a>
<b>Southern Aged Community Respite Program</b>	8358 3173 <a href="http://www.resthaven.asn.au">www.resthaven.asn.au</a>

**Children's Services**

<b>Autism SA</b> Marion Road, Netley	8379 69 76 or 1300 288 476 <a href="http://www.autismsa.org.au">www.autismsa.org.au</a>
<b>Child Adolescent Mental Health Ser (CAMHS) Sthrn</b>	8204 5412 <a href="http://www.flinders.sa.gov.au">www.flinders.sa.gov.au</a>
<b>Flinders Medical Centre Children's Ass Team (CAT)</b>	8204 4433 <a href="http://www.flinders.sa.gov.au">www.flinders.sa.gov.au</a>
<b>Inclusive Directions</b>	7325 8600 <a href="http://www.directions.org.au">www.directions.org.au</a>
<b>Interchange Host Prog &amp; Teen Companion Prog</b>	8132 5300 <a href="http://www.interchangesa.org.au">www.interchangesa.org.au</a>
<b>Novita Children's Services Inc Auxiliary - Mitcham</b>	8276 3215 <a href="http://www.novita.org.au">www.novita.org.au</a>
<b>Playgroup SA</b>	8344 2722 <a href="http://www.playgroupsa.com.au">www.playgroupsa.com.au</a>
<b>Sharing the Fun (YMCA)</b>	8200 2500 <a href="http://www.sa.ymca.org.au">www.sa.ymca.org.au</a>

**Employment & Business Services**

<b>Bedford Industries</b> Goodwood Road Panorama	8275 0211 <a href="http://www.bedfordgroup.com.au">www.bedfordgroup.com.au</a>
<b>Heta</b> Gilbert Street Adelaide	8212 7771 <a href="http://www.heta.com.au">www.heta.com.au</a>
<b>Minda</b>	8422 6200 <a href="http://www.mindainc.com.au">www.mindainc.com.au</a>
<b>SA Group Enterprises (SAGE)</b>	7325 0023 <a href="http://www.sage.org.au">www.sage.org.au</a>
<b>'Y' Options Program (YMCA)</b>	8200 2514 <a href="http://www.sa.ymca.org.au">www.sa.ymca.org.au</a>

**Independent Living Training**

<b>Disability SA</b>	1300 786 117 <a href="http://www.belairfamilyhealthcentre.com.au">www.belairfamilyhealthcentre.com.au</a>
<b>Independent Living Centre</b>	1300 885 886 <a href="http://www.ilcaustralia.org.au">www.ilcaustralia.org.au</a>
<b>Life Without Barriers</b>	8193 9400 <a href="http://www.lwb.org.au">www.lwb.org.au</a>
<b>Royal Society for the Blind (RSB)</b> Pirie Street, Adelaide	8417 5599 <a href="http://www.rsb.org.au">www.rsb.org.au</a>
<b>Community Support</b> Woodville Rd	8429 1200 <a href="http://www.csisa.org.au">www.csisa.org.au</a>

**Recreation & Sport Facilities**

<b>Cross Road Bowl</b> Cross Rd Westbourne Park	8271 2355 <a href="https://www.zonebowling.com/">https://www.zonebowling.com/</a>
-------------------------------------------------	-----------------------------------------------------------------------------------

<b>Friends of Carrick Hill</b> Carrick Hill Drive Springfield	8433 1700 <a href="http://www.carrickhill.sa.gov.au">www.carrickhill.sa.gov.au</a>
<b>Friends of Gamble Garden</b> Main Rd Blackwood	0418 827 825 <a href="http://www.gamblegarden.org.au">www.gamblegarden.org.au</a>
<b>Hawthorn Scented Garden</b> Rear of Mitcham Library	8372 8888
<b>Hyde Park Homing Pigeon Club</b> Mitcham Railway Station	8277 1736
<b>Disability SA</b>	8277 8566 1300 786 117 <a href="http://www.belairfamilyhealthcentre.com.au">www.belairfamilyhealthcentre.com.au</a>
<b>Marion Bowland</b> modified equipment Westfield Marion	8298 9888 <a href="https://www.westfield.com.au/marion/store/7Dln0v1Zbq6g0ia02O2oSm/bowland">https://www.westfield.com.au/marion/store/7Dln0v1Zbq6g0ia02O2oSm/bowland</a>
<b>planNET</b> Fisher St, Fullarton	<a href="mailto:info@plan-netsa.com.au">info@plan-netsa.com.au</a> <a href="http://www.plan-netsa.com.au/">www.plan-netsa.com.au/</a>
<b>Rapid Swim</b> various locations	8410 6999 <a href="http://inclusivesportsa.com.au/rapidswim/">http://inclusivesportsa.com.au/rapidswim/</a>
<b>Riding for the Disabled Assoc of SA (RDASA)</b>	8331 1833 <a href="http://www.rdasa.org.au">www.rdasa.org.au</a>
<b>Special Olympics SA</b> for people with intellectual disability)	8364 5557 <a href="http://www.specialolympics.com.au">www.specialolympics.com.au</a>
<b>Wheelchair Sports Assoc of SA</b> Northfield	8349 6366 <a href="http://www.wheelchairsports-sa.org.au">www.wheelchairsports-sa.org.au</a>
<b>Support Groups, Services &amp; Associations</b>	
<b>Alzheimer's Australia SA</b> Conyngham St, Glenside	1800 100 500 <a href="http://www.fightdementia.org.au">www.fightdementia.org.au</a>
<b>Anglicare SA</b> Port Rd Hindmarsh SA	8305 9200 <a href="http://www.anglicaresa.com.au">www.anglicaresa.com.au</a>
<b>Arthritis Foundation SA</b> Richmond Road Marlestone	8379 5711 or 1800 011 041 <a href="http://www.arthritissa.org.au">www.arthritissa.org.au</a>
<b>Associazione Nazionale Famiglie Degli Emigrati</b>	8243 5550 <a href="http://www.anfe.org.au">www.anfe.org.au</a>
<b>Australian Hearing</b> Marion Hearing Centre	131 797 or 1300 412 512 <a href="http://www.hearing.com.au">www.hearing.com.au</a>
<b>Bedford Industries</b> Goodwood Road Panorama	8275 0211 <a href="http://www.bedfordgroup.com.au">www.bedfordgroup.com.au</a>
<b>Brain Injury Rehabilitation Service Hampstead Rehab Cent</b>	<a href="http://www.rah.sa.gov.au">www.rah.sa.gov.au</a>
<b>CNS Consulting</b> clinical psychology /neuropsychology	8379 8300 <a href="http://www.cnsconsulting.com.au">www.cnsconsulting.com.au</a>
<b>City of Mitcham – Community Wellbeing</b>	8372 8888 <a href="http://www.mitchamcouncil.sa.gov.au">www.mitchamcouncil.sa.gov.au</a>
<b>Deaf Can: Do</b> Grange Rd Welland	8100 8200 <a href="http://www.deafcando.com.au">www.deafcando.com.au</a>
<b>Disability Advisory &amp; Support Service</b> Flinders Uni	8201 5189 <a href="mailto:rosey.robertson@flinders.edu.au">rosey.robertson@flinders.edu.au</a>
<b>Down Syndrome Society of SA</b> McInnes St Ridleyton	8245 4600 <a href="http://www.downssa.asn.au">www.downssa.asn.au</a>
<b>Drug &amp; Alcohol Services SA</b> Magill Rd Stepney	7425 5075 <a href="http://www.sahealth.sa.gov.au/wps/wcm">www.sahealth.sa.gov.au/wps/wcm</a>
<b>Epilepsy Association of SA &amp; NT</b> Regency Rd Prospect	1300 850 081 <a href="https://epilepsycentre.org.au">https://epilepsycentre.org.au</a>
<b>Fibromyalgia SA</b> Arthritis Foundation Marlestone	8379 5711 <a href="http://www.arthritissa.org.au/arthritis-types/fibromyalgia">www.arthritissa.org.au/arthritis-types/fibromyalgia</a>
<b>Flinders Medical Centre Speech &amp; Hearing Clinic</b>	8204 4366 <a href="http://www.flinders.sa.gov.au">www.flinders.sa.gov.au</a>
<b>GROW</b> Brighton Road Hove	8298 9299 <a href="http://www.grow.org.au">www.grow.org.au</a>
<b>Huntington's Disease Unit S A</b> Flinders Medical Cent	8204 4144 <a href="http://www.flinders.sa.gov.au">www.flinders.sa.gov.au</a>
<b>Disability SA</b>	1300 786 117 <a href="http://www.belairfamilyhealthcentre.com.au">www.belairfamilyhealthcentre.com.au</a>
<b>Mental Health Services Older People</b> Sth Rd Edwardstown	8374 5800 <a href="http://www.sahealth.sa.gov.au">www.sahealth.sa.gov.au</a>
<b>Mental Illness Fellowship SA</b>	8378 4100 <a href="http://www.mifsa.org">www.mifsa.org</a>
<b>Minda Incorporated – Client Support Services</b>	8422 6200 <a href="http://www.mindainc.com.au">www.mindainc.com.au</a>
<b>Motor Neurone Disease Assoc SA</b> South Road Hilton	8234 8448 or 1800 777 175 <a href="http://www.mndsa.org.au">www.mndsa.org.au</a>
<b>Obsessive Compulsive Disorder</b> 1800 187 263	<a href="http://www.sane.org/mental-health-and-illness/facts-and-guides/obsessive-compulsive-disorder">www.sane.org/mental-health-and-illness/facts-and-guides/obsessive-compulsive-disorder</a>
<b>Orana - employment, respite accommodation services</b>	8375 2000 <a href="http://www.oranaonline.com.au">www.oranaonline.com.au</a>
<b>Paraplegic &amp; Quadraplegic Ass SA</b> Marden	8355 3500 <a href="http://www.pgsa.asn.au/">www.pgsa.asn.au/</a>
<b>Parkinson's South Australia</b> King William Rd, Unley	8357 8909 <a href="http://www.parkinsonssa.org.au">www.parkinsonssa.org.au</a>
<b>Prostate Cancer Support Group – Adelaide Mitcham</b>	1800 220 099 Free call <a href="http://www.adelaide-mitchampcsg.org">www.adelaide-mitchampcsg.org</a>
<b>Royal Society for the Blind (RSB)</b> Pirie St Adelaide	8417 5599 <a href="http://www.rsb.org.au">www.rsb.org.au</a>
<b>Southern Dyslectic Centre</b> Main South Rd Morphett Vale	8186 6900 <a href="http://www.southerndyslecticcentre.com.au">www.southerndyslecticcentre.com.au</a>
<b>Spastic Centres of SA</b> Woodville	8347 2664 <a href="http://www.scosa.com.au">www.scosa.com.au</a>
<b>Stroke SA</b> including Young Person's Stroke Group Hilton	8352 4644 <a href="http://www.stroke.org.au">www.stroke.org.au</a>
<b>Technical Aid to the Disabled</b> Royal Society for the Blind	8261 2922 <a href="http://www.tadsa.org.au">www.tadsa.org.au</a>
<b>Uniting Communities</b> Pitt Street Adelaide	8202 5111 <a href="http://www.unitingcommunities.org">www.unitingcommunities.org</a>
<b>Wednesday Friendship Centre</b> Princes Road Mitcham	8277 8875