

# Tennis Courts Reserves and Playgrounds

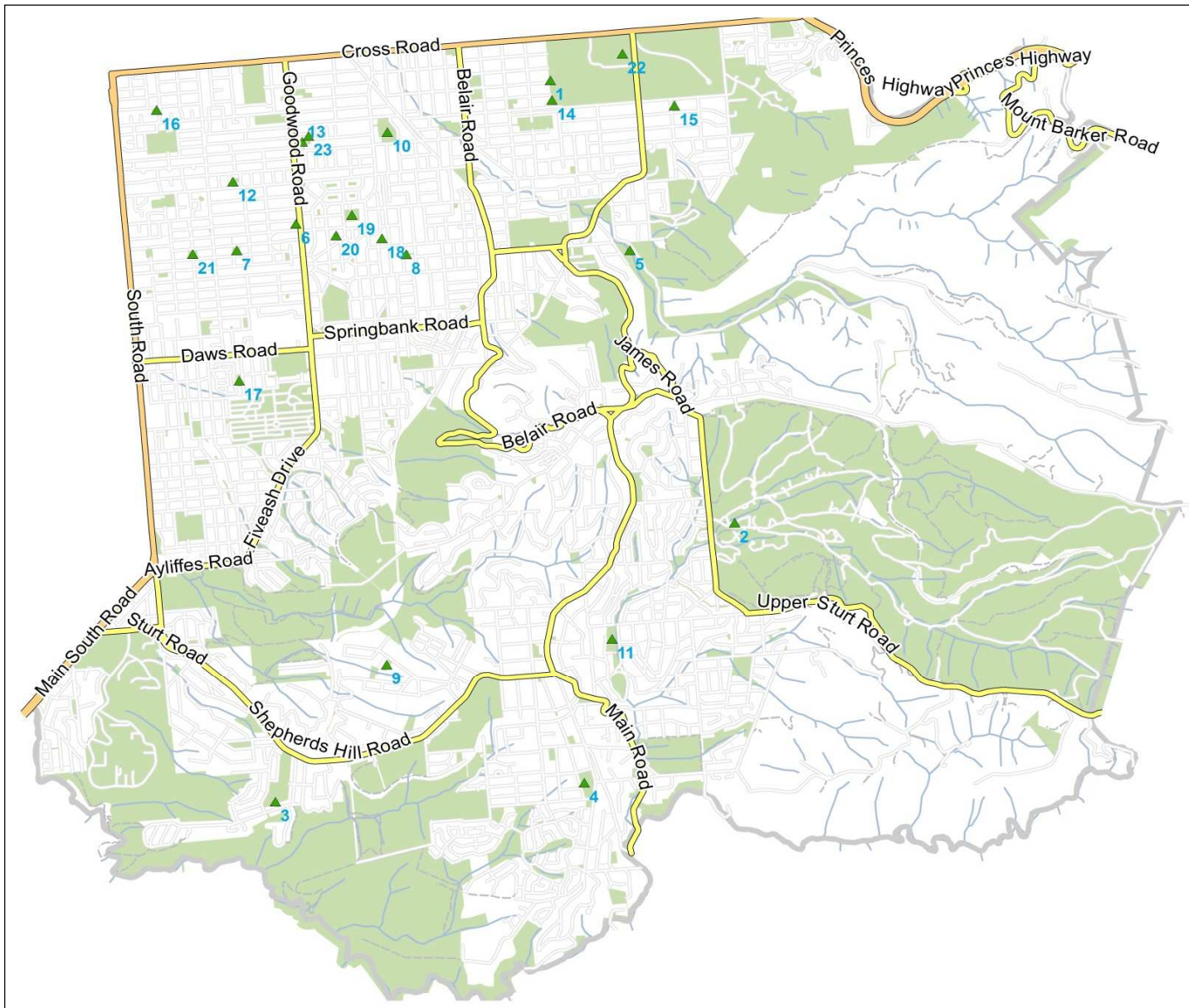


Street Address:  
131 Belair Road  
Torrens Park SA 5062

Postal Address:  
PO Box 21  
Mitcham Shopping Centre  
Torrens Park SA 5062

Phone: (08) 8372 8888  
Fax: (08) 8372 8101  
mitcham@mitchamcouncil.sa.gov.au  
www.mitchamcouncil.sa.gov.au

# Tennis Courts



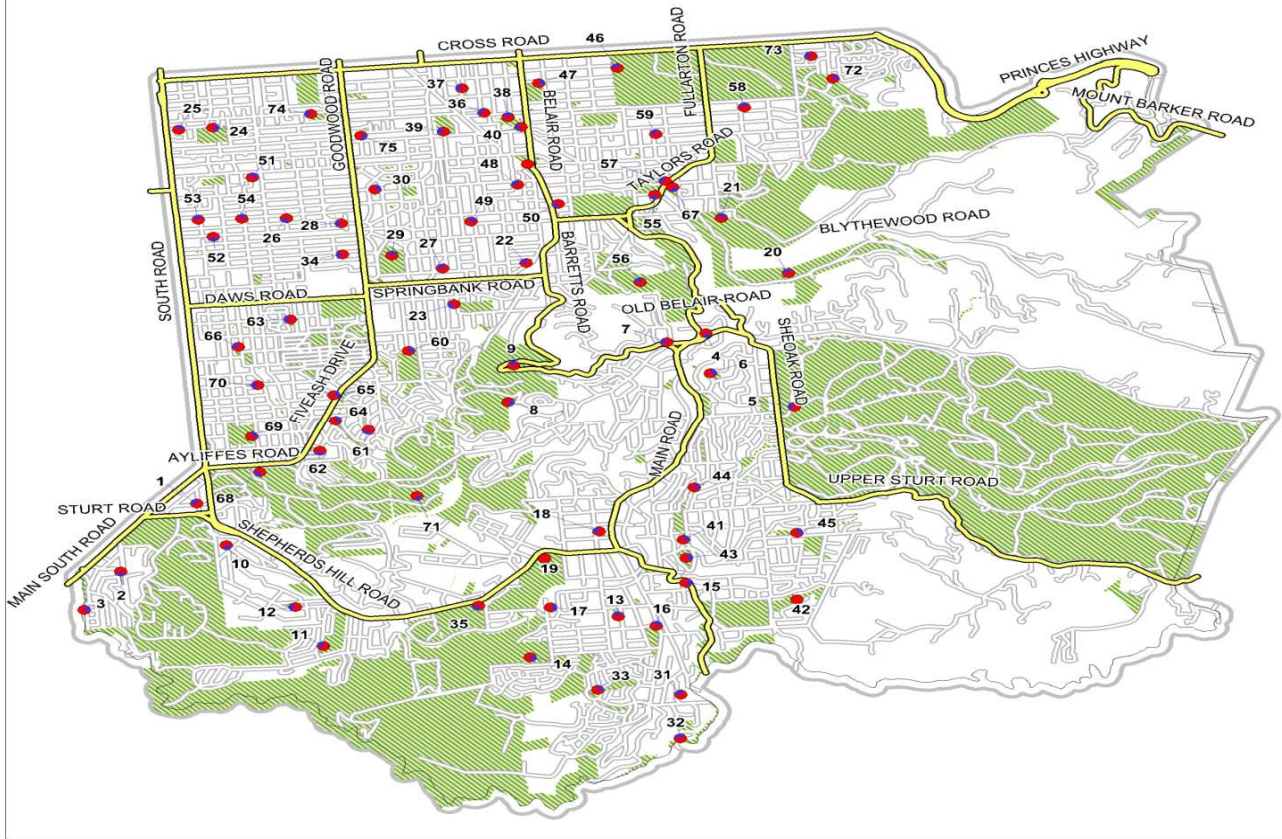
1.	Balham Ave Reserve	12.	Hope ward Tennis Club
2.	Belair National Pk	13.	Kingswood Tennis Club
3.	Bellevue Heights Tennis Club	14.	Kingswood Tennis Courts
4.	Blackwood Tennis Club	15.	Netherby Tennis Club
5.	Brownhill Creek Caravan Pk	16.	Nieass Reserve Tennis Club
6.	CLG Uniting Church Tennis Club	17.	Pasadena Tennis Club
7.	Colonel Light West Tennis Club	18.	Pembroke Place Tennis Crts
8.	Denman Comm. Centre Tennis Courts	19.	Reade Park Lawn Tennis Club
9.	Gibbs Park Tennis Courts	20.	Rochester Ave Tennis Club
10.	Hawthorn Lawn Tennis Club	21.	Rozelle Tennis Crts
11.	Hawthorndene Tennis Club	22.	Urrbrae High School
		23.	Westbourne Park Tennis Crts

Every effort has been made to provide correct information in this brochure at the time of printing. Please notify changes to [communityinfo@mitchamcouncil.sa.gov.au](mailto:communityinfo@mitchamcouncil.sa.gov.au) You can update your club or group records on Connecting Up [www.sacommunity.org](http://www.sacommunity.org) For more Information click on [www.mitchamcouncil.sa.gov.au](http://www.mitchamcouncil.sa.gov.au) **Printed November 18**

## TENNIS COURTS

<b>Belair</b>	
<b>Belair National Park Upper Sturt Rd</b> 8278 5477 Office, 8278 8279 court/hire	<ul style="list-style-type: none"> <li>• 44 Tennis Courts for hire</li> <li>• Free gas barbecues</li> </ul>
<b>Bellevue Heights</b>	
<b>Bellevue Heights Tennis Club</b> Manson Res Sargent Pde 8278 1201 <a href="http://www.bellevueheightstennisclub.com.au">www.bellevueheightstennisclub.com.au</a>	<ul style="list-style-type: none"> <li>• Tennis courts for hire</li> <li>• 2 free public courts 5 &amp; 6 no bookings required</li> </ul>
<b>Blackwood</b>	
<b>Blackwood Tennis Club</b> Hewett Sprts Grd Coromandel Pde 0419 849 814 <a href="http://www.blackwoodtennis.org.au">www.blackwoodtennis.org.au</a>	<ul style="list-style-type: none"> <li>• Nine courts, coaching for Juniors</li> <li>• Private coaching for members</li> </ul>
<b>Clarence Gardens</b>	
<b>Nieass Reserve Tennis Club</b> Dinwoodie & Clovelly Ave 8358 5483 or 0409 284 221	<ul style="list-style-type: none"> <li>• Social tennis &amp; court hire</li> </ul>
<b>Colonel Light Gardens</b>	
<b>Colonel Light Gardens Uniting Church Tennis Club</b> 8278 6585 or 0427 863 429 <a href="mailto:dirdyson@yahoo.com.au">dirdyson@yahoo.com.au</a>	<ul style="list-style-type: none"> <li>• Court hire</li> </ul>
<b>Colonel Light West Tennis Club</b> Penang Ave 0409 675 425 <a href="http://www.clwtc.org.au">www.clwtc.org.au</a> <a href="mailto:cathybeames@live.com.au">cathybeames@live.com.au</a>	<ul style="list-style-type: none"> <li>• Court hire, Club house &amp; facilities for hire</li> <li>• Junior &amp; senior tennis</li> </ul>
<b>Pembroke Place Tennis Courts</b> Colonel Light Gardens	<ul style="list-style-type: none"> <li>• Public courts</li> </ul>
<b>Reade Park Lawn Tennis Club</b> 8276 4449 Club 8278 7170 Dawn <a href="http://www.readeparktennis.net">www.readeparktennis.net</a>	<ul style="list-style-type: none"> <li>• 14 lawn tennis courts Some for hire</li> </ul>
<b>Rochester Avenue Tennis Club</b> Lane West Parkway/Lancaster Ave & Rochester Ave	<ul style="list-style-type: none"> <li>• 2 tennis courts for public use</li> <li>• Nets up all the time</li> </ul>
<b>Cumberland Park</b>	
<b>Hope Ward Tennis Club</b> Tweed St Cumberland Pk 8277 3937 <a href="http://www.hwtc.com.au">www.hwtc.com.au</a>	<ul style="list-style-type: none"> <li>• 4 Courts for hire 2 under lights</li> </ul>
<b>Eden Hills</b>	
<b>Gibbs Park Tennis Courts</b> Wonoka Street Eden Hills 8278 2260 <a href="http://www.gibbsparktennis.wordpress.com">www.gibbsparktennis.wordpress.com</a>	<ul style="list-style-type: none"> <li>• 2 hardcourt tennis crts available for members.</li> </ul>
<b>Hawthorn</b>	
<b>Hawthorn Lawn Tennis Club</b> Price Memorial Oval 0408 004 533 <a href="http://www.hawthornlawntennisclub.net.au">www.hawthornlawntennisclub.net.au</a>	<ul style="list-style-type: none"> <li>• 4 Lawn Courts, 2 under lights</li> </ul>
<b>Hawthorndene</b>	
<b>Apex Park</b> Watahuna Ave Hawthorndene	<ul style="list-style-type: none"> <li>• 4 Free Public Courts – Nets up</li> </ul>
<b>Kingswood</b>	
<b>Balham Ave Res</b> Balham Ave, East Halsbury Ave, Kyre St, Seafield Ave, Tutt Ave Kingswood	<ul style="list-style-type: none"> <li>• Free public access nets up</li> <li>• Some use by schools</li> </ul>
<b>Kingswood Tennis Crts</b> Unley High Sch 0419 829 624 <a href="http://www.kingswoodtennisclub.com.au">www.kingswoodtennisclub.com.au</a>	<ul style="list-style-type: none"> <li>• Courts/clubrooms for hire - functions &amp; tennis</li> <li>• Courts for social use at other times (for hire)</li> </ul>
<b>Lower Mitcham</b>	
<b>Denman Community Centre</b> Denman Tce 8277 6098 <a href="mailto:info@denmantennis.org.au">info@denmantennis.org.au</a>	<ul style="list-style-type: none"> <li>• Hall and court for hire</li> <li>• Recreation Centre</li> </ul>
<b>Melrose Park</b>	
<b>Rozelle Tennis Courts</b> Rozelle Ave & Jose St	<ul style="list-style-type: none"> <li>• Free public access tennis courts</li> </ul>
<b>Mitcham</b>	
<b>Brownhill Creek Caravan Park</b> Brownhill Creek Rd 8271 4824 <a href="http://www.brownhillcreekcaravanpark.com.au">www.brownhillcreekcaravanpark.com.au</a>	<ul style="list-style-type: none"> <li>• 1 tennis court for hire weekdays, wknds busy</li> <li>• No dogs allowed</li> </ul>
<b>Netherby</b>	
<b>Kingswood Tennis Courts</b> Unley High Sch 0419 829 624 <a href="http://www.kingswoodtennisclub.com.au">www.kingswoodtennisclub.com.au</a>	<ul style="list-style-type: none"> <li>• Northern 2 courts for free public use</li> </ul>
<b>Netherby Tennis Club</b> Claremont & Bartley Ave Netherby 8227 2424/0417 788 001 <a href="http://www.tennis.com.au/netherby">www.tennis.com.au/netherby</a>	<ul style="list-style-type: none"> <li>• Coaching school</li> <li>• 4 all weather courts with club house</li> </ul>
<b>Pasadena</b>	
<b>Pasadena Tennis Club</b> Naomi Tce 7225 2919 <a href="mailto:rsrose961@gmail.com">rsrose961@gmail.com</a>	<ul style="list-style-type: none"> <li>• 3 Tennis Courts for hire</li> <li>• Summer and winter social</li> </ul>
<b>Westbourne Park</b>	
<b>Kingswood Tennis Club</b> Batchelor Res, Norseman Ave 0419 829 624 <a href="http://www.kingswoodtennisclub.com.au">www.kingswoodtennisclub.com.au</a>	<ul style="list-style-type: none"> <li>• Courts for hire</li> <li>• Social tennis</li> </ul>
<b>Westbourne Park</b> Batchelor Res, Harvey Ave Angas Rd.	<ul style="list-style-type: none"> <li>• Tennis crt Harvey Avenue entrance is for public use</li> </ul>

# Parks, Reserves and Playgrounds

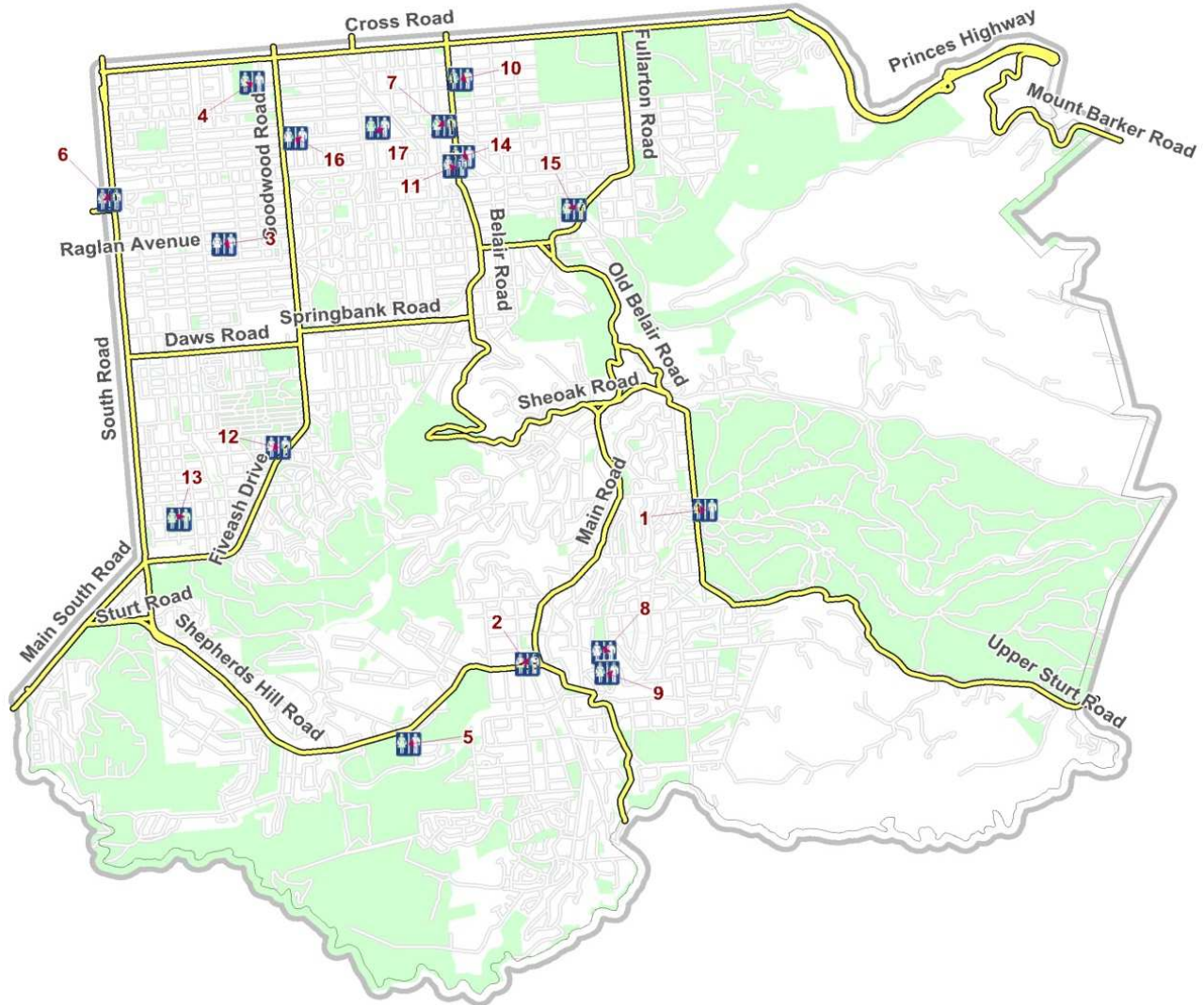


<b>Bedford Park</b>		27	Kent Rd ResSturt Ave	52	Chellaston Res
1	Burbank Res Edison Rd *	28	Light Pce Res	53	Kegworth Rd Res
2	Francis St Res Franklin Ave *	29	Mortlock Pk West Parkway *	54	Rozelle Res Jose St
3	Riverside Dve Res	30	Portland Pce Res *	<b>Mitcham</b>	
<b>Belair</b>		<b>Coromandel Valley</b>		55	Mitcham Res Old Belair Rd *
4	Belair Community Hall	31	Jackson Res Rustic Ave	56	Randell Pk Braemar Rd
5	Belair National Pk Upper Sturt Rd	32	Shepherds Crt Res	57	Sutton Gdn Albert St
6	Monalta Dve Playgnd *	<b>Craigburn Farm</b>		<b>Netherby</b>	
7	Nunyara Res Sheoak Rd	33	Woodlake Dve Res	58	Netherby Res
8	Sleeps Hill Quarries Res Lynton	<b>Daw Park</b>		59	Waverley St Res
9	Windy Point Res Belair Rd	34	Crozier Ave Res	<b>Panorama</b>	
<b>Bellevue Heights</b>		<b>Eden Hills</b>		60	CC Hood Res Panorama Dve
10	Donnybrook Rd Res	35	Karinya Res Shepherds Hill Rd	61	Piazza Res Toohey Cres
11	Manson Oval Sargent Pde	<b>Hawthorn</b>		62	Thiselton Cres Res
12	Whicker Res Heathfield Rd	36	Delwood Res George St	<b>Pasadena</b>	
<b>Blackwood</b>		37	Godden St Res	63	Naomi Tce Res
13	Bailey Res	38	Hawthorn Sensory Gdn Belair Rd	64	Pasadena Res Tumby Boulevard
14	Blackwood Hill Oval/Res Trevor Tce	39	Price Memorial Oval Hawthorn Cres	65	Sierra Nevada Res Cash Grv *
15	Gamble Cottage Gdn Main Rd	40	Soldiers Memorial Gdn Angas Rd	<b>St Marys</b>	
16	Hewett Sport Gnd Coromandel Pde*	<b>Hawthorndene</b>		66	Donald St Res *
17	Ozzie Goldsworthy Res Trevor Tce	41	Apex Pk Watahuna Ave*	67	Norman St Res
18	Waite St Res Young St *	42	Archibald Pk Renfrew Dve	68	Shepherds Hill Res Ayliffes Rd
19	Wittunga Botanic Gdn Shepherds	43	Hawthorndene Oval Watahuna Ave	69	St Marys Pk Laura Ave
<b>Brownhill Creek</b>		44	Sherwood Ave Res	70	Thurles St Res*
20	Brownhill Crk Rd Res	45	Suffolk Rd Res	71	Watiparinga res Ellis Ave
21	McElligotts Quarry Res Carrick Hill	<b>Kingswood</b>		<b>Urrbrae</b>	
<b>Clapham</b>		46	Balham Ave Res & Playgnd *	72	Birksgate Drv Res
22	Haddington Res Price *	47	Kingswood Oval Rugby Tce *	73	Meadowbank Rise Res
23	Strathcona Ave Res	<b>Lower Mitcham</b>		<b>Westbourne Park</b>	
<b>Clarence Gardens</b>		48	Barrans Res Wattlebury Rd *	74	Avenue Rd Res
24	AA Bailey Rec Gnd Goodale Ave *	49	Denman Tce Res	75	Batchelor Res Angas Rd *
25	Goodale Ave Res *	50	Nellie's Gdn Belair Rd	** Res only no playground * Irrigated Res	
<b>Colonel Light Gardens</b>		<b>Melrose Park</b>			
26	Hill View Res Rozelle Ave *	51	Alexander Ross Res Mead St		

<b>GARDENS</b>		
<b>Blackwood</b>		
<b>Gamble Cottage Garden</b> 296 Main Road	Gamble Cottage Garden is maintained by volunteers open every day 8370 3897	
<b>Wittunga Boanic Garden</b> Shepherds Hill Rd	Managed by the Botanic Gardens & State Herbarium. 8278 2993	
<b>Mitcham</b>		
<b>Sutton Garden</b> Albert Street & Old Belair Rd	(near Mitcham Reserve) Mitcham	
<b>Hawthorn</b>		
<b>Hawthorn Sensory Garden</b> Belair Rd by Library	Raised scented sensory plants, maintained by volunteers, Wheelchair access.	
<b>Lower Mitcham</b>		
<b>Nellie's Garden</b> Mitcham Railway Station Belair	Garden is maintained by volunteers & is part of the historic precinct always open.	
<b>PARKS, RESERVES AND PLAYGROUNDS</b>		
<b>Bedford Park</b>		
<b>Burbank Reserve</b> Edison & Letchford Rd	<ul style="list-style-type: none"> <li>Fully fenced, table &amp; chairs</li> </ul>	<ul style="list-style-type: none"> <li>Junior play, swings &amp; slides</li> </ul>
<b>Francis Street Reserve</b> Francis & Franklin St	<ul style="list-style-type: none"> <li>Play station &amp; spring rockers</li> </ul>	<ul style="list-style-type: none"> <li>Small slide &amp; table &amp; chairs</li> </ul>
<b>Riverside Reserve</b> Riverside Dv	<ul style="list-style-type: none"> <li>Play station, Swings &amp; Slide</li> <li>Spring animals</li> </ul>	<ul style="list-style-type: none"> <li>Lawn pk/Sturt River, table &amp; chairs</li> <li>Fitness equipment</li> </ul>
<b>Belair</b>		
<b>Belair Community Hall</b> Sheoak Rd	<ul style="list-style-type: none"> <li>Play station &amp; swings</li> </ul>	<ul style="list-style-type: none"> <li>Small playground &amp; seats</li> </ul>
<b>Belair National Park</b> Upper Sturt Rd	<ul style="list-style-type: none"> <li>Adventure playground &amp; Ovals</li> </ul>	<ul style="list-style-type: none"> <li>Picnic areas &amp; pavilions, tennis crts</li> </ul>
<b>Monalta Drive Playground</b> Monalta Dve	<ul style="list-style-type: none"> <li>Swings &amp; Play station</li> </ul>	<ul style="list-style-type: none"> <li>Handball Target &amp; Monrail</li> </ul>
<b>Bellevue Heights</b>		
<b>Donnybrook Reserve</b> Donnybrook Rd	<ul style="list-style-type: none"> <li>Gazebo, Barbeque</li> <li>Basketball Unit</li> </ul>	<ul style="list-style-type: none"> <li>Small playground, swings</li> <li>Creek setting</li> </ul>
<b>Manson Oval</b> Sargent Pde	<ul style="list-style-type: none"> <li>Swing &amp; Slide</li> </ul>	<ul style="list-style-type: none"> <li>Spring animals &amp; play station</li> </ul>
<b>Whicker Reserve</b> Heathfield Rd Ridgehaven Dve	<ul style="list-style-type: none"> <li>Play station, swings &amp; Monorail</li> </ul>	<ul style="list-style-type: none"> <li>Balance station, table &amp; chairs</li> </ul>
<b>Blackwood</b>		
<b>Blackwood Hill Oval</b> Cumming St	<ul style="list-style-type: none"> <li>Small playground/football club</li> <li>Swings &amp; Play station</li> </ul>	<ul style="list-style-type: none"> <li>Large playground SE corner</li> <li>Climbing equipment, table &amp; chairs</li> </ul>
<b>Hewett Sports Ground</b> Coromandel Pde	<ul style="list-style-type: none"> <li>Slide &amp; See-saw</li> </ul>	<ul style="list-style-type: none"> <li>Play station &amp; Oval</li> </ul>
<b>Ossie Goldsworthy Reserve</b> Trevor Tce	<ul style="list-style-type: none"> <li>Play station, swing</li> </ul>	<ul style="list-style-type: none"> <li>Spring animals &amp; seating</li> </ul>
<b>Waite Street Reserve</b> Waite & Young St	<ul style="list-style-type: none"> <li>Swings, slide &amp; play station</li> <li>Basketball unit</li> </ul>	<ul style="list-style-type: none"> <li>Electric bbq, seats</li> <li>Netball ring</li> </ul>
<b>Clapham</b>		
<b>Strathcona Reserve</b> Strathcona Ave	<ul style="list-style-type: none"> <li>Play station</li> <li>Toddlers bike track</li> </ul>	<ul style="list-style-type: none"> <li>Spring animals, nest swing</li> <li>Tables &amp; seats</li> </ul>
<b>Haddington Reserve</b> Price & Gort Avenues	<ul style="list-style-type: none"> <li>Swings &amp; Slide</li> </ul>	<ul style="list-style-type: none"> <li>See-saw, play station</li> </ul>
<b>Clarence Gardens</b>		
<b>Goodale Reserve</b> Goodale Ave	<ul style="list-style-type: none"> <li>Pirate ship &amp; swing</li> </ul>	<ul style="list-style-type: none"> <li>Spring animals &amp; double slide</li> </ul>
<b>AABailey Rec Ground Bailey Res</b> Aldershot Ave	<ul style="list-style-type: none"> <li>Climbing equipment</li> <li>Slides &amp; mon rail</li> </ul>	<ul style="list-style-type: none"> <li>Swing – all access, basketball unit</li> <li>Barbecue &amp; seating &amp; gazebo</li> </ul>
<b>Colonel Light Gardens</b>		
<b>Hill View Reserve</b> Rozelle & Penang Ave	<ul style="list-style-type: none"> <li>Swings, Play station</li> </ul>	
<b>Kent Road Reserve</b> Sturt Ave & Kent Rd	<ul style="list-style-type: none"> <li>Swings &amp; slide &amp; play station</li> </ul>	<ul style="list-style-type: none"> <li>Spring animals, tables &amp; seating</li> </ul>
<b>Light Place Reserve</b> Light Place	<ul style="list-style-type: none"> <li>Bandstand &amp; seating</li> </ul>	
<b>Mortlock Park</b> West Parkway <ul style="list-style-type: none"> <li>BMX track for 14 yrs &amp; under</li> </ul>	<ul style="list-style-type: none"> <li>Nest swings &amp; slide</li> <li>Balance equipment</li> </ul>	<ul style="list-style-type: none"> <li>Large Play station &amp; spring animals</li> <li>Climbing equipment</li> </ul>
<b>Portland Place Reserve</b> Portland Place	<ul style="list-style-type: none"> <li>Fenced, table &amp; chairs</li> </ul>	<ul style="list-style-type: none"> <li>Play section, swings &amp; sand digger</li> </ul>
<b>Coromandel Valley</b>		
<b>Jackson Reserve</b> Rustic Ave	<ul style="list-style-type: none"> <li>Play station &amp; Swings</li> </ul>	<ul style="list-style-type: none"> <li>Table &amp; chairs</li> </ul>
<b>Sturt Linear Park</b> Shepherd Crt	<ul style="list-style-type: none"> <li>Shared use trail, Shelters</li> </ul>	<ul style="list-style-type: none"> <li>Creek walk &amp; Seating</li> </ul>
<b>Craigburn Farm</b>		
<b>Fisher Reserve</b> Fergusson Ave & Fisher Cres	<ul style="list-style-type: none"> <li>Large Hill slide</li> <li>Rockers &amp; spinners, swings</li> </ul>	<ul style="list-style-type: none"> <li>Climbing equipment</li> <li>Small Nature Play, table &amp; chairs</li> </ul>
<b>Hayman Reserve</b> Bonython Way	<ul style="list-style-type: none"> <li>Climbing equipment &amp; shelter</li> </ul>	<ul style="list-style-type: none"> <li>Rockers &amp; swings</li> </ul>
<b>Woodlake Drive Reserve</b>	<ul style="list-style-type: none"> <li>Climbing equipment swing</li> </ul>	<ul style="list-style-type: none"> <li>Gazebo, Seating, Nest swing</li> </ul>
<b>Cumberland Park</b>		
<b>Avenue Road Reserve</b>	<ul style="list-style-type: none"> <li>Junior skate facility</li> <li>Seating, barbeque</li> </ul>	<ul style="list-style-type: none"> <li>Play station</li> <li>Basketball unit, fitness equipment</li> </ul>
<b>Daw Park</b>		
<b>Crozier Reserve</b> Crozier Avenue	<ul style="list-style-type: none"> <li>Play station, swings</li> <li>Theme play train, plane rocker</li> </ul>	<ul style="list-style-type: none"> <li>Spring animals</li> <li>Tables &amp; seats</li> </ul>
<b>Harvey Hayes Reserve</b> Day Avenue	<ul style="list-style-type: none"> <li>Basketball ring</li> </ul>	<ul style="list-style-type: none"> <li>Tables &amp; chairs</li> </ul>
<b>Eden Hills</b>		
<b>Karinya Reserve</b> Shepherds Hill Rd	<ul style="list-style-type: none"> <li>Play station, Swings &amp; slides</li> </ul>	<ul style="list-style-type: none"> <li>Shelter &amp; elec bbq</li> </ul>
<b>Kinedana Reserve</b> Park St	<ul style="list-style-type: none"> <li>Play station &amp; swings</li> </ul>	<ul style="list-style-type: none"> <li>Bumble bee double rocker</li> </ul>
<b>Hawthorn</b>		
<b>Delwood Reserve</b> George & Kent St	<ul style="list-style-type: none"> <li>Swings &amp; slides, Play station</li> </ul>	<ul style="list-style-type: none"> <li>Spring animals &amp; tables &amp; seats</li> </ul>
<b>Godden Reserve</b> Godden St	<ul style="list-style-type: none"> <li>Swing &amp; Slide</li> </ul>	<ul style="list-style-type: none"> <li>Play station</li> </ul>
<b>Price Memorial Oval</b> Hawthorn Cres	<ul style="list-style-type: none"> <li>Swing &amp; slide &amp; spinner</li> <li>Trick skate rocker</li> </ul>	<ul style="list-style-type: none"> <li>Spring animals</li> <li>Play station</li> </ul>

<b>Soldiers Memorial Gardens</b> Angas & Belair Rds	• Creek & bridge, toilets	• Seating & Gazebo
<b>Hawthorndene</b>		
<b>Sherwood Reserve</b> Sherwood Ave	• Play station	• Swings & seating
<b>Archibald Park</b> Renfrew Dve	• Small play station & swings	• Table & chairs
<b>Hawthorndene Oval &amp; Apex Park</b> Watahuna Ave • BMX track exp over 12 yrs	• Swings & see-saw rubber base • Monorail rubber base • Senior play station & slide	• Elec bbq & toilets • Toddler bike track rubber • Junior play station rubber base
<b>Suffolk Road Reserve</b>	• Swings, see saw & play station	• Small BMX track under 12 yrs, Shelter
<b>Kingswood</b>		
<b>Kingswood Oval</b> Rugby Tce & Halsbury Ave	• Swing, slide & see-saw, seating	• Play station & spring animals
<b>Balham Avenue Reserve</b> • Fitness stretching station	• Swings, slide, see-saw • Basketball & netball ring	• Tennis crts & Play station • Tables & chairs
<b>Lower Mitcham</b>		
<b>Barrans Reserve</b> Wattlebury Rd/Wesley St	• Fenced, Table & chairs	• Play station Swings & slides
<b>Denman Reserve</b> Denman Tce	• Fenced, table & chairs • Swings & slides & see-saw	• Climbing frame, small flying fox • Junior play section
<b>Melrose Park</b>		
<b>Chellaston Reserve</b> Coronna Ave	• Barbeque & seating	• Small bike track, native garden setting
<b>Kegworth Reserve</b> Kegworth Ave	• Play station & nest swings • Gazebo, tables & seats	• Basketball • Paved track
<b>Alexander Ross Reserve</b> Mead Cres	• Swings	• Play station
<b>Marion Reserve</b> Marion St	• Climbing equipment & Swings	• Basketball unit & Table & chairs
<b>Rozelle Reserve</b> Jose St	• Play station & Swing	• Tennis Crts, Gazebo, table & chairs
<b>Mitcham</b>		
<b>Mitcham Reserve</b> Old Belair Rd Brownhill Creek	• Swings & slide & see-saw • Play station & spring animals	• Creek, elec bbq's & shelters • Toilets
<b>McElliotts Reserve</b> Carrick Hill Dve Springfield	• Swings & see saw	• Bbq, Lawn & shelter
<b>Waverley Street Reserve</b>	• Swings & slide & see saw	• Table & charis & Gazebo & seats
<b>Netherby</b>		
<b>Netherby Reserve</b> Netherby & Bartley Aves	• Swings & Play station	• Tennis Courts
<b>Panorama</b>		
<b>CC Hood Park</b> Panorama Dve & Eliza Pce • Adult fitness equipment, Lge open space area	• Play stations, bbq & seats • Swings & slides & see-saw	• Off leash enclosed Dog Park • Walking/bike/jogging circuit
<b>Piazza Reserve</b> The Piazza & Toohey Cres	• Table & chairs	• Swings & Play station
<b>Pasadena</b>		
<b>Naomi Reserve</b> Naomi Terrace	• Swings & Play station	• Tennis crts & Basketball unit
<b>Pasadena Reserve</b> Tumbly & Eyre Boulevards	• Swings & slide & See-saw	• Basketball unit & Play station
<b>Sierra Nevada Reserve</b> Day & Fiveash Drives	• Swings & spinner & Play station	• Basketball unit & Table & chairs
<b>Thiselton Crescent Res</b> Fiveash Dve Panorama	• Swings & slide	• Play station
<b>St Marys</b>		
<b>Donald Street Reserve</b>	• Swings & slide, Play station • Toddler bike path	• Climbing orbs • Table & chairs, fully fenced area
<b>Norman Street</b>	• Swings & Play station	• Barbeque & Paths
<b>Thurles Street</b>	• Swings, slide, see-saw & tables	• Play station & Basketball unit
<b>St Marys Park</b> Laura Avenue	• Junior BMX & Basketball unit	• Drinking fountain & Oval
<b>Urrbrae</b>		
<b>Waite Conservation Reserve</b> Urrbrae House		
<b>Birskgate Reserve</b> Birskgate Dve	• Play station & swings	• Table & chairs
<b>Meadowbank Rise Reserve</b>	• Play station & swings	• Spring animals
<b>Westbourne Park</b>		
<b>Batchelor Res</b> Angas Rd Harvey Norseman Ave	• Shelter, table & chairs	• Play station, swings & slide
<b>BUSHLAND RESERVES</b>		
<b>Belair</b>		
<b>Belair National Park</b> Upper Sturt Rd	Managed by National Parks and Wildlife. For information, 8278 5477.	
<b>Sleeps Hill Quarries</b> High St		
<b>Windy Point Reserve</b> Belair Rd	The best views of the City of Mitcham, Adelaide & the coast.	
<b>Bellevue Heights</b>		
<b>Sturt Gorge Recreation Pk</b> Broadmeadow Dve	Managed by National Parks and Wildlife. For information, 8278 5477.	
<b>Blackwood</b>		
<b>Blackwood Hill Reserve</b> Trevor Tce	Nature & bushwalking trails	
<b>Brownhill Creek</b>		
<b>Brownhill Creek Reserve</b> Brownhill Creek Rd	Managed by National Parks and Wildlife. For information, 8278 5477.	
<b>Eden Hills</b>		
<b>Gulfview Reserve</b> Gulfview Rd	Nature & bushwalking trails	
<b>Karinya Reserve</b> Northcote Rd	Defined trails linking Colebrook through bushland to the Karinya parking area.	
<b>Watiparinga</b> Shepherds Hill Rec Pk/Ayliffes Rd	Managed by the National Trust.	
<b>Mitcham</b>		
<b>Randell Park</b> Old Belair Rd	Nature & bushwalking trails.	
<b>St Marvs</b>		
<b>Shepherds Hill Reserve</b> Ayliffes Road	Managed by National Parks and Wildlife. For information, 8278 5477.	

# PUBLIC TOILETS



PUBLIC TOILETS	
<b>Belair</b>	
1.	Belair National Pk Multiple toilets on information sheet
<b>Blackwood</b>	
2.	Shepherds Hill Rd service station & roundabout Wheelchair access
<b>Colonel Light Gardens</b>	
3.	Hillview Reserve, Penang Ave
<b>Cumberland Park</b>	
4.	Woolworths, Goodwood Rd
<b>Eden Hills</b>	
5.	Karinya Reserve, Shepherds Hill Rd
<b>Edwardstown</b>	
6.	Castle Plaza Shopping Cen South Rd Wheelchair access
<b>Hawthorn</b>	
7.	Soldiers Memorial Gdns, Belair Rd Wheelchair access

<b>Hawthorndene</b>	
8.	Apex Park, (Tennis Courts) Watahuna Avenue
9.	Hawthorndene Oval, Wattle Avenue
<b>Kingswood</b>	
10.	Kingswood Oval, Belair Rd
<b>Lower Mitcham</b>	
11.	Mitcham Community Cen Belair Rd Wheelchair access
<b>Pasadena</b>	
12.	Shopping Centre, Fiveash Dve
<b>St Marys</b>	
13.	St Marys Park, Laura Ave
<b>Torrens Park</b>	
14.	Mitcham Shopping Cen Belair Rd Wheelchair access
15.	Mitcham Res, Norman Walk/Old Belair Rd Wheelchair access
<b>Westbourne Park</b>	
16.	Batchelor Reserve, Norseman Avenue
17.	Price Memorial Oval, Angas Rd