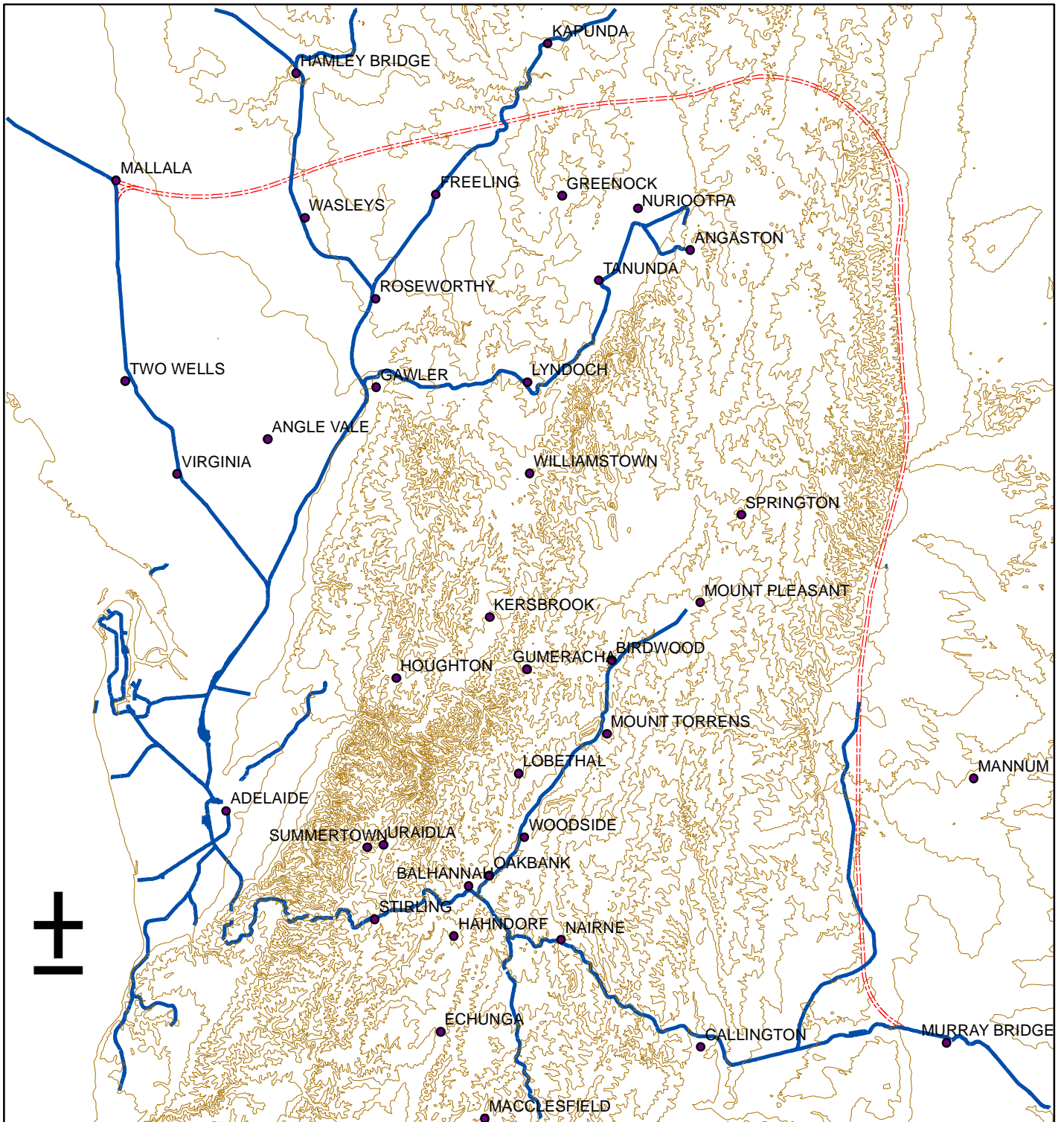


# Proposed Rail Bypass for Adelaide



## Legend

- Towns and Cities
- 50m Contours
- Existing Rail Lines (In Use and Disused)
- - - Proposed Rail Bypass Route

0 5 10 20 Kilometers

Created by:

Dr Simon Bengler  
 School of Geography, Population and Environmental Management  
 Flinders University